

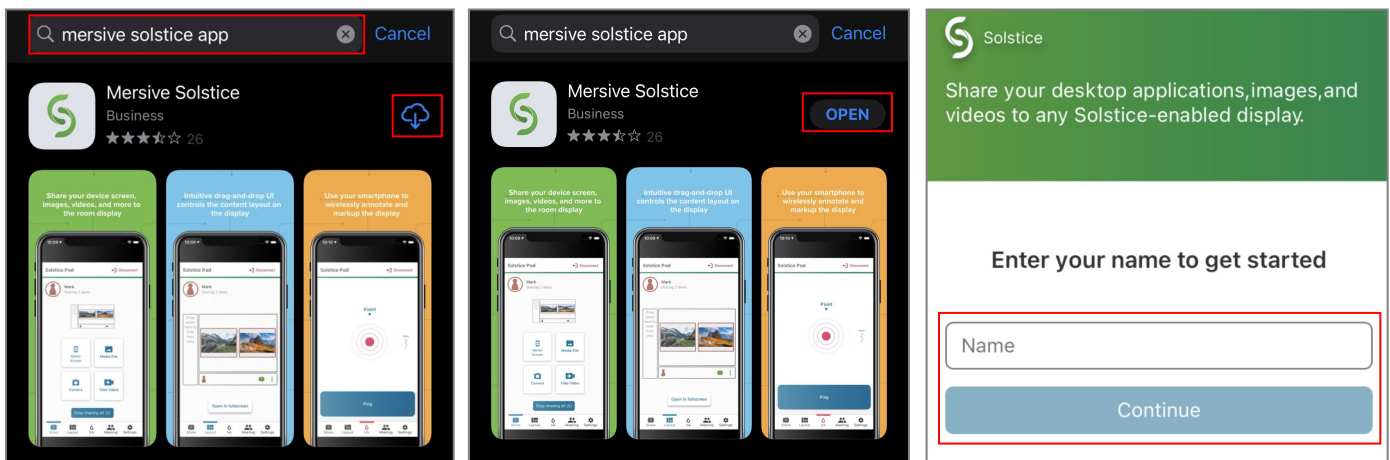


How to Connect to Mersive Solstice Mobile

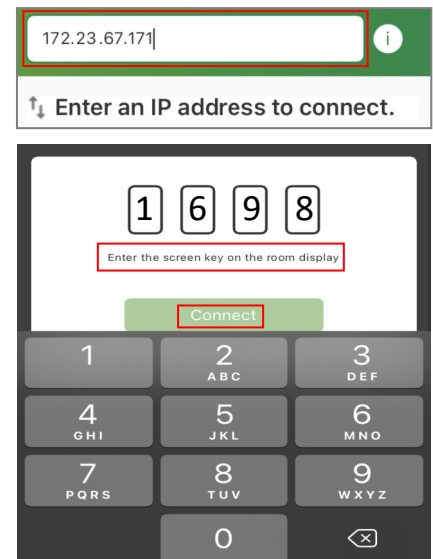
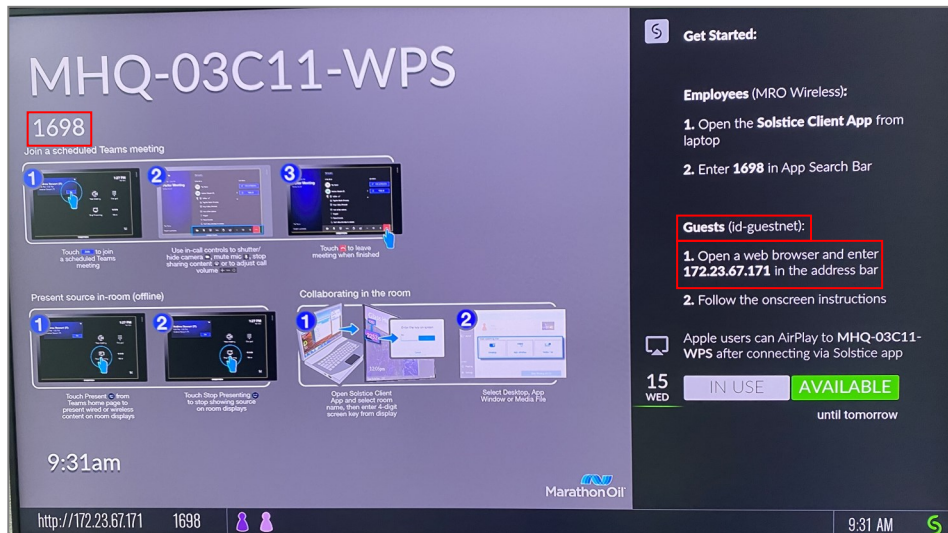
The Solstice mobile app enables users on mobile devices to wirelessly share and control unlimited content on a Solstice-enabled display to drive more efficient, engaging, and collaborative meetings.

To download the Solstice app on a mobile device, follow the steps below:

1. Open the App Store on your device and search for the Mersive Solstice app. After the app appears, select the download icon. After the app downloads, select “Open”. The Solstice app will automatically open and ask you to enter your full name. After completing the field, select “Continue”.



2. After selecting “Continue”, the Solstice homepage will appear.
3. To connect to Solstice in the workspace, enter the ten-digit number located under the “Guests” section on the display screen into the “Quick Connect” bar in the Solstice app and press enter.
4. A pop-up screen will appear requesting the 4-digit “Screen Key” located on the left side of the display screen. After entering in the screen key, select “Connect”.

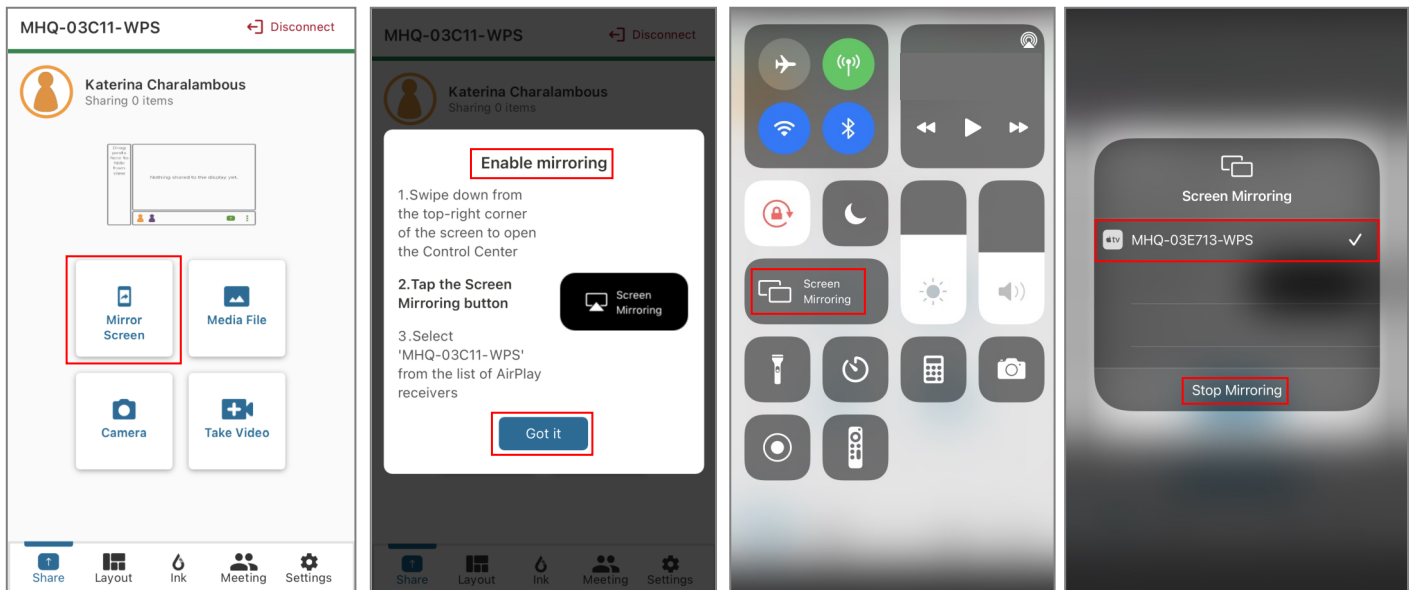




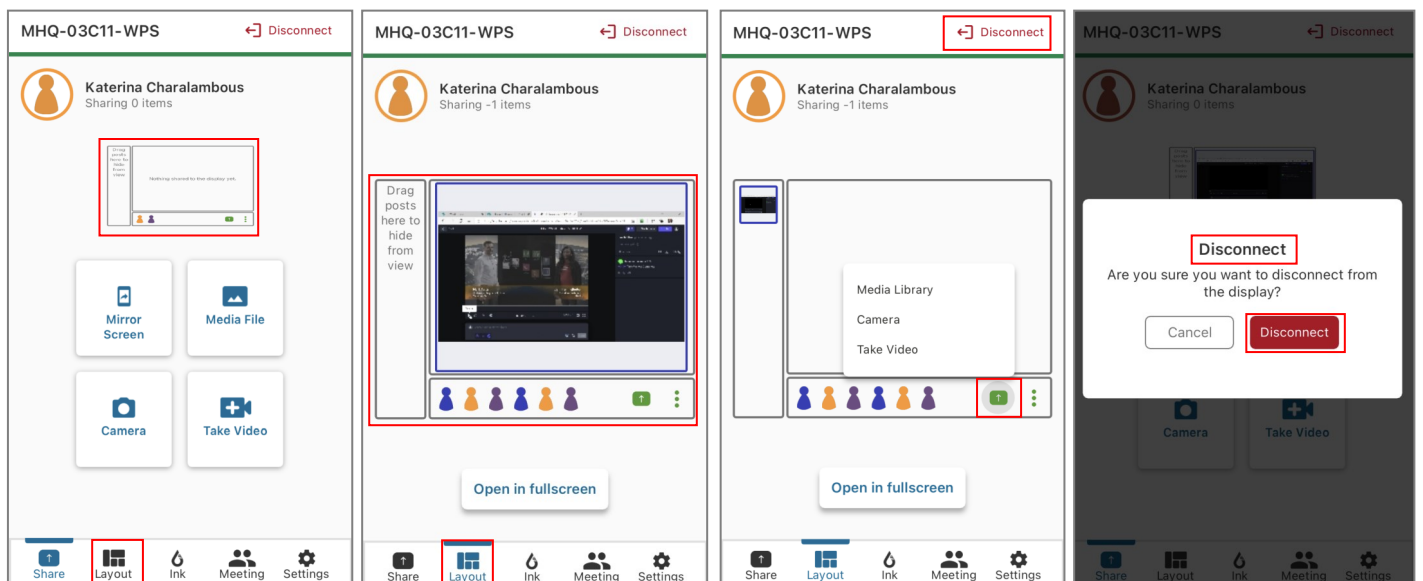
Solstice Mobile App Features

After connecting to the Solstice-enabled display, your Solstice account homepage will appear with the content-sharing features available.

1. To use the “Mirror Screen” feature, select the icon and a pop-up page will appear providing the instructions to “Enable mirroring”. Once you’ve connected screen mirroring through your device, the home screen on your mobile device will share directly on the display screen in your workspace. **Please note:** If you do not select “**Stop Mirroring**”, your phone will continue to screen mirror to the display even after manually disconnecting from the display in the mobile app.



2. To access the “Layout” feature, select the screen on the homepage or the “Layout” button. This feature will show any images, videos, or screen mirroring you selected to share to the display screen.



3. To disconnect from the display screen, select the disconnect button on the top right. A pop-up page will appear to confirm your disconnection. **Please note:** If you do not manually disconnect, you will continue to stay connected to the display screen even after leaving the workspace.